

Grosse-Île Wind Farm Project

Erosion

BAPE public hearings

February 2026



Note

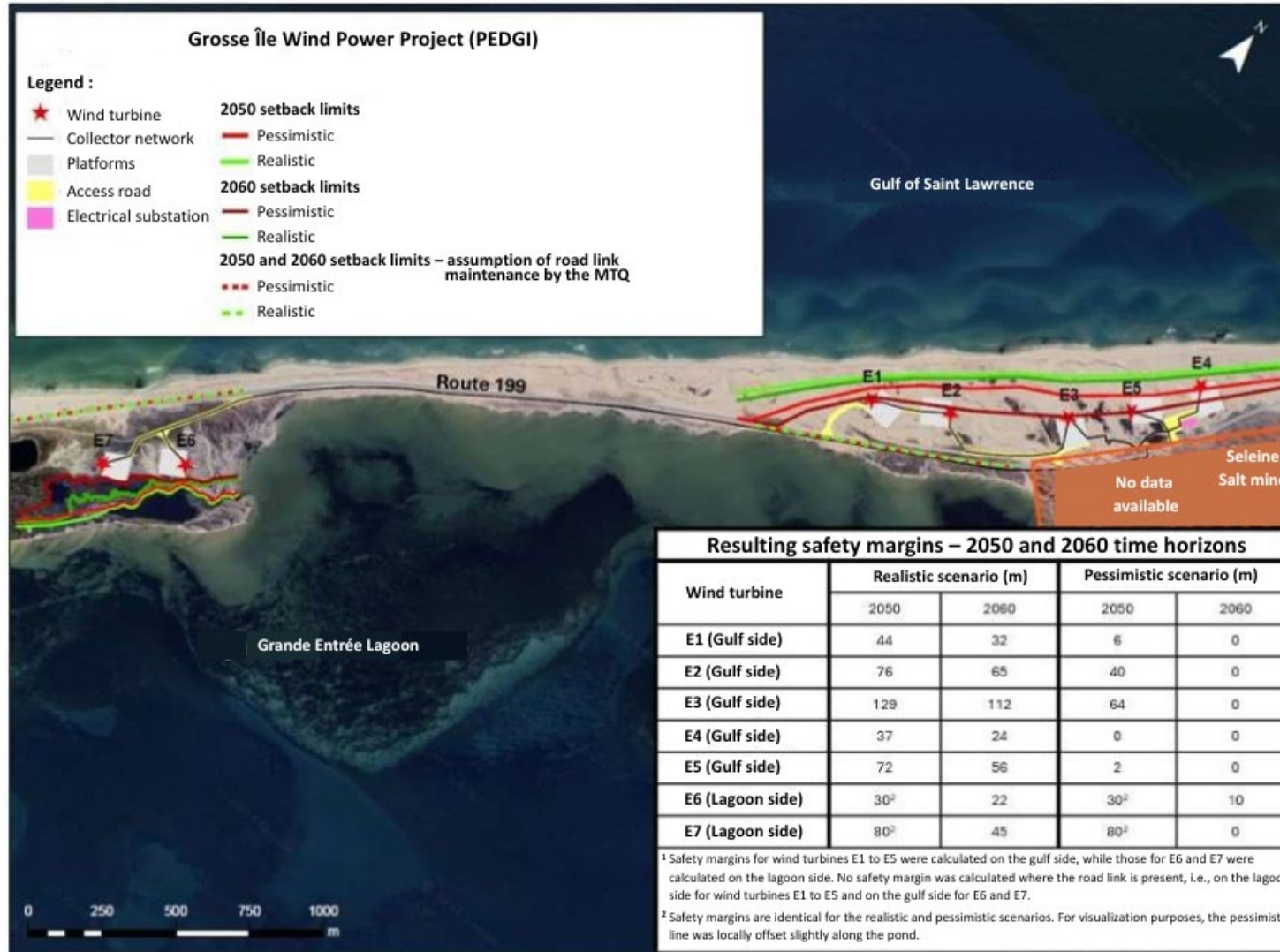
The French version remains the official version and should be used as the reference.

The original document is available online on the BAPE project webpage:

<https://voute.bape.gouv.qc.ca/dl/?id=00000752087>

Assessment of coastal flooding and erosion risk

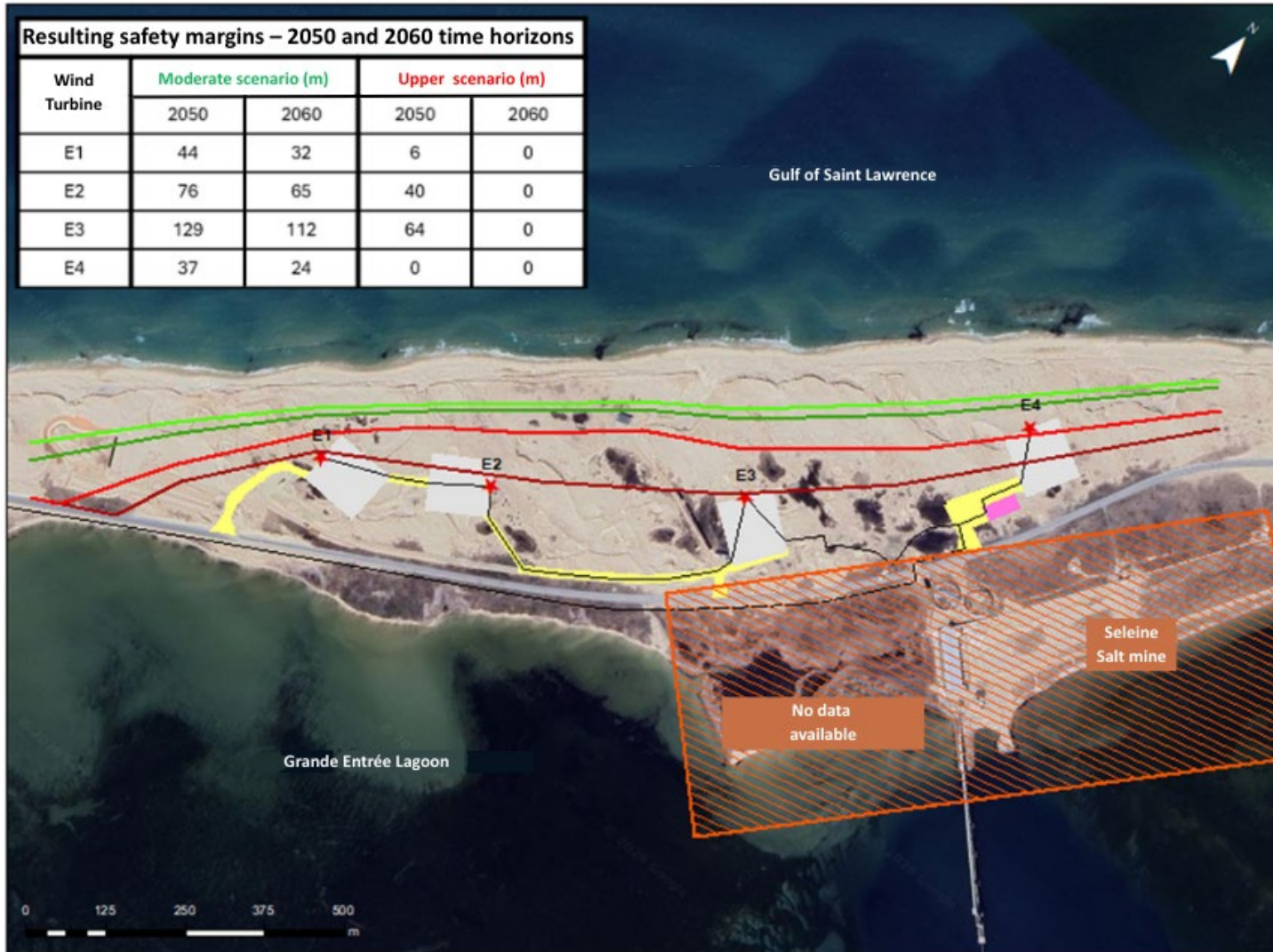
Setback distance and safety margins - 2050 and 2060 time horizons



Reference: Prediction of setback limits and safety margins for the 2050 and 2060 horizons under the two (2) scenarios analyzed, based on the report "Assessment of Coastal Flooding and Erosion Risk – Grosse-Île Wind Farm Project (PEDGI)", September 2024

Assessment of coastal flooding and erosion risk

Setback distance and safety margins - 2050 and 2060 time horizons - Gulf-side erosion hazard



Proactive erosion monitoring and management

Annual shoreline morphological monitoring program

- An annual morphological monitoring program (GPS, drones, cameras) will document shoreline erosion trends in detail and allow safety margins to be updated. This will also support interpretation of shoreline evolution and the sharing of this information with key local stakeholders to inform decision-making.

Gradual process

- Erosion remains gradual (evolutionary), and the short-term risk is low; current safety margins are sufficient.
- The Proponent has sufficient time to plan and implement an appropriate solution prior to any emergency situation, even in the event of a major storm.

Importance of a coordinated approach

Broader collaboration would be required if protection or stabilization works become necessary

- Other infrastructures (Route 199, power lines, storage facilities, etc.) are located within the project study area; any intervention would need to be coordinated with each owner to account for their constraints and asset management requirements.

Actions already initiated by the Proponent

- Formal request submitted to the CMÎM to integrate the Coastal Erosion and Flooding Intervention Framework (which already includes the Grosse-Île sector).
- Commitment to implement an annual monitoring plan and to share data with the CMÎM and local stakeholders.
- Preliminary discussions with certain stakeholders regarding potential solution options, drawing on experience from other projects carried out in the Islands.